



Customer information packet

XM281562T

15//10HP, 1175//985RPM, 3PH, 60//50HZ, 284T

Class - CLI GP D; CLII GP F,G

Division - Division I

Specifications

Enclosure	XPFC
Frame	284T
Frame Material	Iron
Frequency	50.00 Hz 60.00 Hz
Motor Letter Type	Three Phase
Output @ Frequency	10.000 HP @ 50 HZ 15.000 HP @ 60 HZ
Phase	3
Synchronous Speed @ Frequency	1200 RPM @ 60 HZ
Voltage @ Frequency	380.0 V @ 50 HZ 230.0 V @ 60 HZ 190.0 V @ 50 HZ 460.0 V @ 60 HZ
XP Class and Group	CLI GP D; CLII GP F,G
XP Division	Division I
Agency Approvals	CSA EEV UL
Ambient Temperature	40 °C
Auxillary Box	No Auxillary Box
Auxillary Box Lead Termination	None
Base Indicator	Rigid
Bearing Grease Type	Polyrex EM (-20F +300F)
Blower	None
Constant Torque Speed Range	6
Current @ Voltage	42.000 A @ 230.0 V 42.000 A @ 208.0 V 36.000 A @ 190.0 V 21.000 A @ 460.0 V 18.000 A @ 380.0 V
Design Code	A
Drip Cover	No Drip Cover

Part detail

Revision	B
Type	AC
Mech. spec.	
Base	
Status	PRD/A
Elec. spec.	10WGY561
Layout	10LYE106
Eff. date	07-17-2023
CD Diagram	CD0180
Poles	06
Leads	9#10
Proprietary	False
Created date	03-23-2021

Duty Rating	CONT
Efficiency @ 100% Load	91.7 %
Electrically Isolated Bearing	Not Electrically Isolated
Feedback Device	NO FEEDBACK
Heater Indicator	No Heater
High Voltage Full Load Amps	18.0 a
Insulation Class	F
Inverter Code	Inverter Duty
IP Rating	NONE
KVA Code	H
Lifting Lugs	Standard Lifting Lugs
Locked Bearing Indicator	Locked Bearing
Max Speed	1800 rpm
Motor Lead Termination	Flying Leads
Motor Standards	NEMA
Motor Type	1046M
Mounting Arrangement	F1
Number of Poles	6
Overall Length	28.61 IN
Power Factor	73
Product Family	Hazardous Location Motor
Pulley Face Code	Standard
Rodent Screen	None
Service Factor	1.00
Shaft Diameter	1.875 IN
Shaft Ground Indicator	No Shaft Grounding
Shaft Rotation	Reversible
Speed	1175 rpm
Speed Code	Single Speed
Starting Method	Direct on line
Thermal Device - Bearing	None
Thermal Device - Winding	Normally Closed Thermostat
Vibration Sensor Indicator	No Vibration Sensor
Winding Thermal 1	None

Winding Thermal 2

None

XP Temp Code

T3C

Nameplate

NP0887XPSLEV

NO.		CC	010A		
S/N		TEMP CODE	T3C		
SPEC.	10-0000-2030	INV.TYPE	PWM		
CAT.NO.	XM281562T	C HP FR	60	C HP TO	90
HP	15//10	CT HZ FROM	6	CT HZ TO	60
VOLTS	230/460//190/380	VT HZ FROM	6	VT HZ TO	60
AMPS	42/21//36/18	MAG CUR	22/11		
RPM	1175//985	MX RPM	1800		
HZ	60//50	PH	3	CL	F
		NOM.EFF.	91.7		
SER.F.	1.00	DES	A	SL HZ	1.3
				WK2	4.9
FRAME	284T	RATING	40C AMB-CONT		
	NEMA MG-1 PART 5, IP54				
	1.15 SF ON SINE WAVE				

Parts list

Part number	Description	Quantity
SA392431	SA 10-0000-2030	1.000 ea
RA382987	RA 10-0000-2030	1.000 ea
LB1624	COMBINED WARNING LABEL, ISO/ANSI PICTOGR	1.000 ea
LC0181	CONNECTION LABEL	1.000 ea
NP0887XPSLEV	SS XP INV UL CSA-EEV CC CL-I GP-D	1.000 ea
85XU0407S04	4X1/4 U DRIVE PIN STAINLESS	2.000 ea
85XU0407S04	4X1/4 U DRIVE PIN STAINLESS	4.000 ea
MN416A01	TAG-INSTAL-MAINT no wire (2100bx)4/22	1.000 ea
LB1073	ALUM XP CAUTION LABEL	1.000 ea
10FH1008A01	310 FAN HOUSING X-PROOF MACH.	1.000 ea
HW1001A31	LOCKWASHER 5/16, ZINC PLT .591 OD, .319 I	3.000 ea
10XN3118K12	5/16-18 X .75 GRADE 5, ZINC PLATED	3.000 ea
09FN3001B02	EXTERNAL FAN, PLASTIC (COMES W/SCREW FRO	1.000 ea
HW2500A25	WOODRUFF KEY USA #1008 #BLOW CARBON STEE	1.000 ea
MJ1000A02	GREASE, POLYREX EM EXXON	0.130 lb
WD4100A03	DE-750 HEYCO PLUG 62MP0750 MICRO PLASTIC	1.000 ea
10EP1701A01	FR ENDPLATE, MACH	1.000 ea
HA3050A03	3/8-16 X 2.25" GRADE 8 BOLT	4.000 ea
HW1001A38	LOCKWASHER 3/8, ZINC PLT .688 OD, .382 I	4.000 ea
HW5100A11	W3917-042 WVY WSHR (WB)	1.000 ea
HW4500A20	1/8NPT SL PIPE PLUG	1.000 ea
HW4500A20	1/8NPT SL PIPE PLUG	1.000 ea
10EP1709A08	PU ENDPLATE, X-PROOF W/LABYRINTH SHAFT G	1.000 ea
HW1001A38	LOCKWASHER 3/8, ZINC PLT .688 OD, .382 I	4.000 ea
HA3050A03	3/8-16 X 2.25" GRADE 8 BOLT	4.000 ea
10XN2520K40	1/4-20 X 2-1/2 HEX HD CAPSCREW, GRADE 5, Z	4.000 ea
HW1001A25	LOCKWASHER 1/4, ZINC PLT .493 OD, .255 I	4.000 ea
HW4500A20	1/8NPT SL PIPE PLUG	1.000 ea
HW4500A20	1/8NPT SL PIPE PLUG	1.000 ea
12CB1001A01	K.O.BOX, MACH X-PROOF, 1.50 NPT HOLE	1.000 ea
10XN3118K16	5/16-18 X 1' GRADE #5, STL, ZINC PLATE	4.000 ea

HW1001A31	LOCKWASHER 5/16, ZINC PLT.591 OD, .319 I	4.000 ea
WD1000B25	GND LUG, BURNDY L125HP OR T&B L125HP-BB	1.000 ea
19XW3118G08	.31-18X.50,HEX WSHR HD,TAPTITE 2,GREEN	1.000 ea
12CB1501A01	COND.BOX LID, MACH., X-PROOF, 310,312	1.000 ea
10XN3816K20	3/8-16 X 1.25 HEX HD CAP GRADE 5	6.000 ea
HW1001A38	LOCKWASHER 3/8, ZINC PLT .688 OD, .382 I	6.000 ea
MG1025G29	WILKOFASST, 789.229, DARK CHARCOAL GRAY	0.125 ga
12PA1000	PACKAGING GROUP PRINT PK1024A07	1.000 ea
HW2501H28	KEY, 1/2 SQ X 3.250	1.000 ea

AC Induction Motor Performance Data

Record # 67038

Typical performance - not guaranteed values

Winding: 10WGY561-R013		Type: 1046M		Enclosure: XPFC	
Nameplate Data			460 V, 60 Hz: High Voltage Connection		
Rated Output (HP)	15		Full Load Torque	66.5 LB-FT	
Volts	230/460		Start Configuration	direct on line	
Full Load Amps	42/21		Breakdown Torque	195 LB-FT	
R.P.M.	1175		Pull-up Torque	91.4 LB-FT	
Hz	60 Phase	3	Locked-rotor Torque	115 LB-FT	
NEMA Design Code	A KVA Code	H	Starting Current	125 A	
Service Factor (S.F.)	1		No-load Current	11.3 A	
NEMA Nom. Eff.	91.7 Power Factor	73	Line-line Res. @ 25°C	0.56099 Ω	
Rating - Duty	40C AMB-CONT		Temp. Rise @ Rated Load	49°C	
			Locked-rotor Power Factor	32.9	
			Rotor inertia	5.63 LB-FT ²	

Load Characteristics 460 V, 60 Hz, 15 HP

% of Rated Load	25	50	75	100	125	150
Power Factor	34	54	66	73	76	77
Efficiency	85	90.6	91.8	92	91.5	91.3
Speed	1197	1193	1188.7	1183.9	1179	1177.5
Line amperes	12.2	14.3	17.3	20.8	25.1	26.1

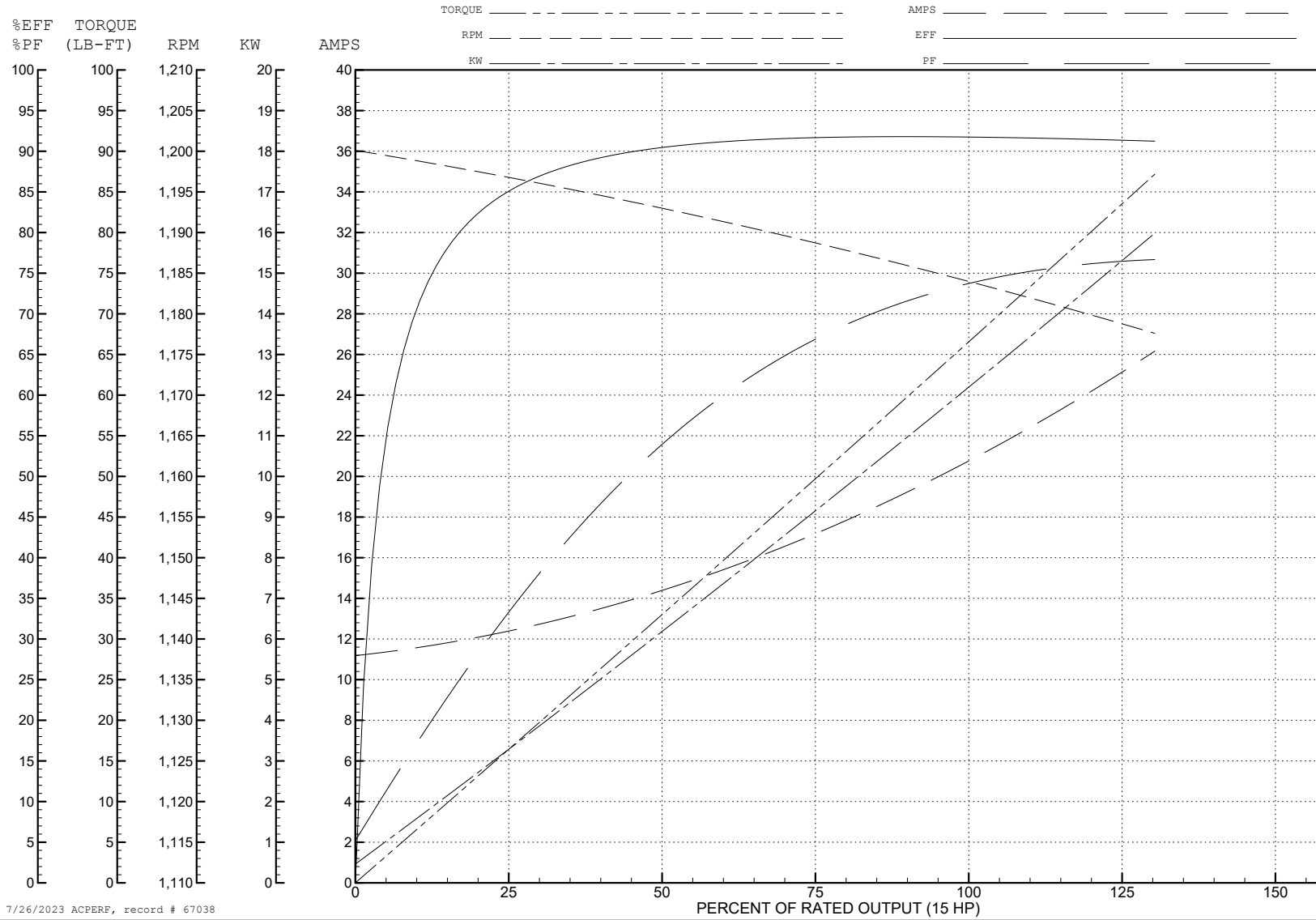
ABB Motors and Mechanical Inc.

WINDING # 10WGY561

Typical performance - not guaranteed values.

15 HP 3 PH 60 HZ 1175 RPM 460 V 1046M

TORQUES (LB-FT): PO=195 PU=91.4 LR=115 LRA=125



7/26/2023 ACPERF, record # 67038

AC Induction Motor Performance Data

Record # 75699

Typical performance - not guaranteed values

Winding: 10WGY561-R010		Type: 1046M		Enclosure: XPFC		
Nameplate Data			380 V, 50 Hz: High Voltage Connection			
Rated Output (HP)	15//10		Full Load Torque	53.18 LB-FT		
Volts	230/460//190/380		Start Configuration	direct on line		
Full Load Amps	42/21//36/18		Breakdown Torque	187 LB-FT		
R.P.M.	1175//985		Pull-up Torque	94 LB-FT		
Hz	60//50	Phase	3	Locked-rotor Torque	118 LB-FT	
NEMA Design Code	A		KVA Code	H	Starting Current	121 A
Service Factor (S.F.)	1		No-load Current	10.99 A		
NEMA Nom. Eff.	91.7	Power Factor	73	Line-line Res. @ 25°C	0.502 Ω	
Rating - Duty	40C AMB-CONT		Temp. Rise @ Rated Load	39°C		
S.F. Amps			Temp. Rise @ S.F. Load	45°C		
			Locked-rotor Power Factor	36.5		
			Rotor inertia	5.63 LB-FT ²		

Load Characteristics 380 V, 50 Hz, 10 HP

% of Rated Load	25	50	75	100	125	150
Power Factor	29	48	60	68	73	74
Efficiency	82.5	89	90.8	91.2	90.9	90.9
Speed	998	994	991	987	983	982
Line amperes	11.68	13.26	15.51	18.13	21.4	21.87

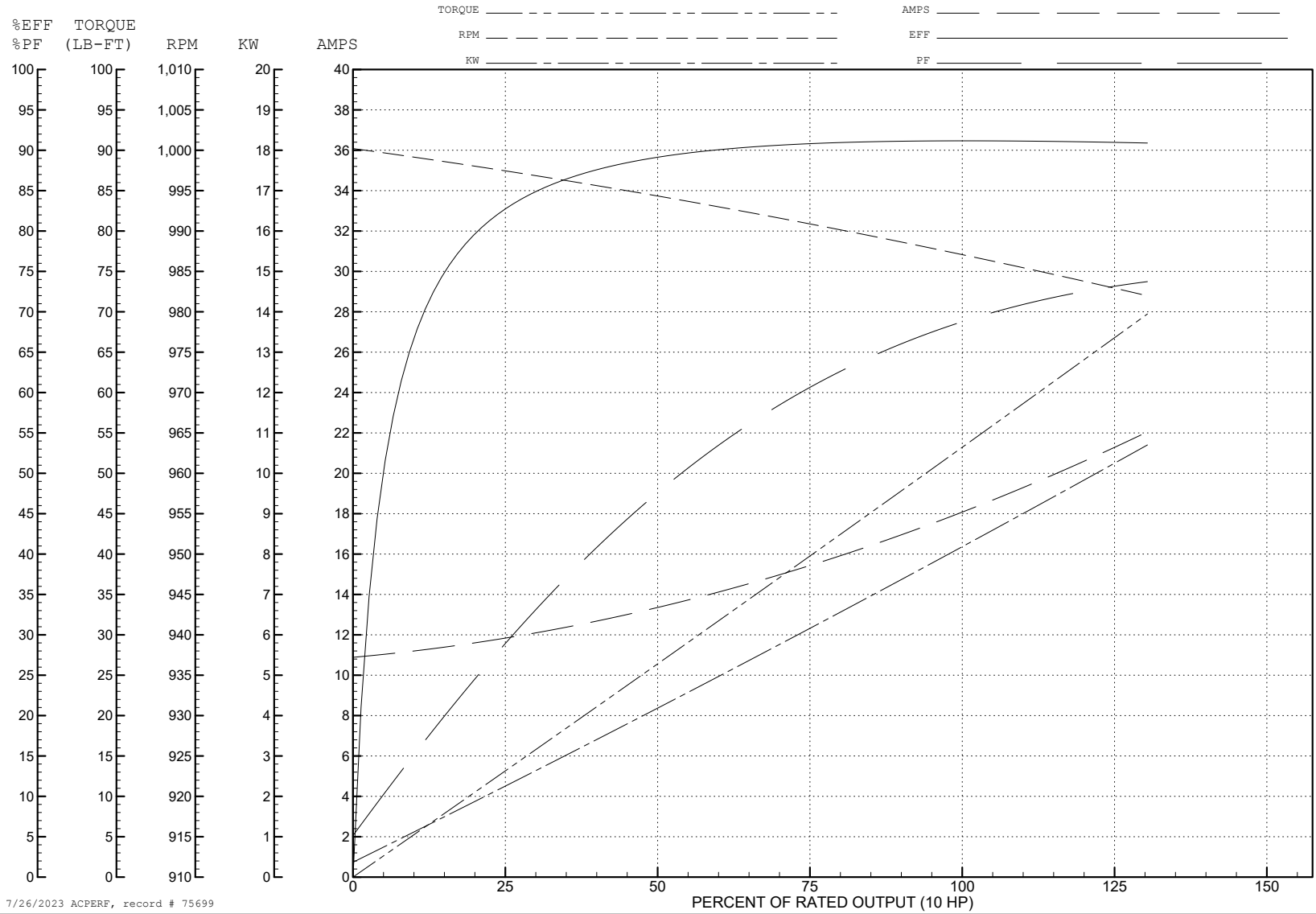
ABB Motors and Mechanical Inc.

WINDING # 10WGY561

10 HP 3 PH 50 HZ 987 RPM 380 V 1046M

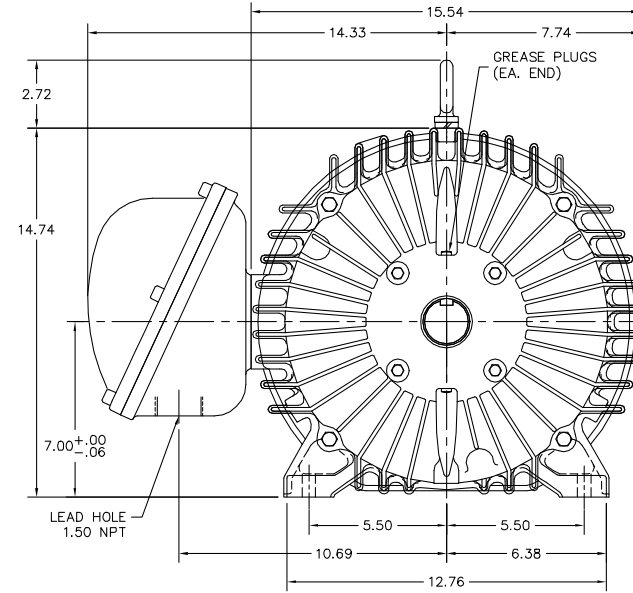
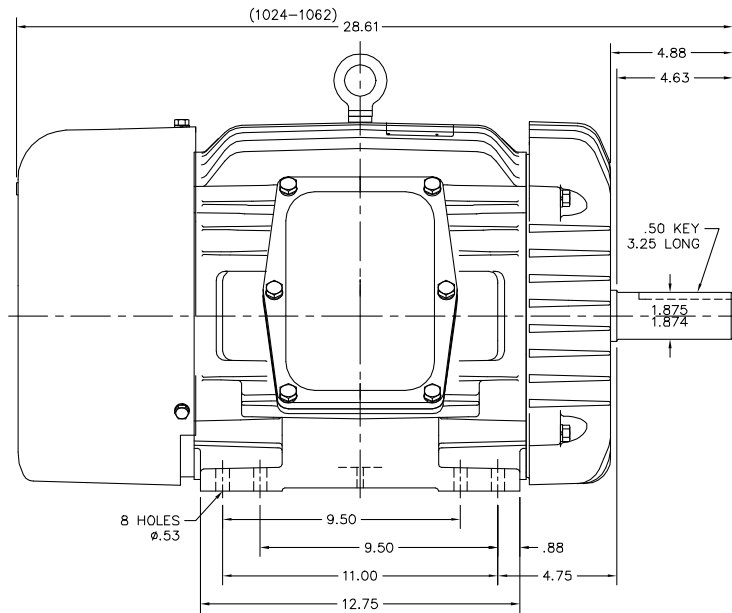
Typical performance - not guaranteed values.

TORQUES (LB-FT): PO=187 PU=94 LR=118 LRA=121



7/26/2023 ACPERF, record # 75699

10LVE106



CUSTOMER IS RESPONSIBLE FOR DETERMINING THAT BALDOR'S PRODUCT WILL PERFORM SUITABLY IN THE INTENDED APPLICATION.

REV. DESC: ADDED 1062 STACK		
REV. LTR: M	VERSION: 04	TDR: 000001123693
FILE: \AAA\00001\944	REVISED: 01:49:53 05/05/2021	BY: USER01
MTL: -		

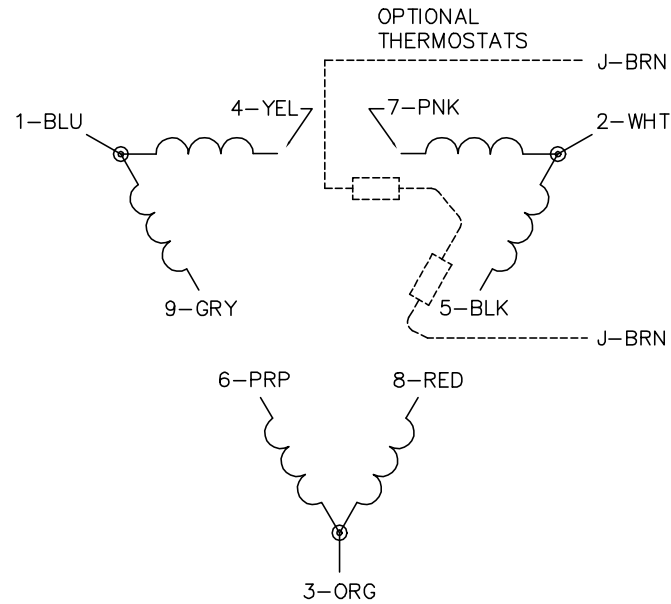
BALDOR - RELIANCE®

HORZ XPFC 284-6T CL.I GP.D,CL.II GP.F&G

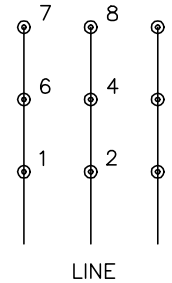
SH 1 of 1

10LVE106

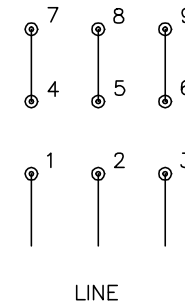
CD0180



LOW VOLTAGE
(2D)



HIGH VOLTAGE
(1D)



NOTES:

1. INTERCHANGE ANY TWO LINE LEADS TO REVERSE ROTATION.
2. OPTIONAL THERMOSTATS ARE PROVIDED WHEN SPECIFIED.
3. ACTUAL NUMBER OF INTERNAL PARALLEL CIRCUITS MAY BE A MULTIPLE OF THOSE SHOWN ABOVE.
4. LEAD COLORS ARE OPTIONAL. LEADS MUST ALWAYS BE NUMBERED AS SHOWN.

CD0180

REV. DESC: ADD CLASS CONN00000007		
REV. LTR: D	VERSION: 01	TDR: 000001099922
FILE: \AAA\00005\148	REVISED: 10: 25: 29 02/19/2019	BY: ENBRIRO
MTL: -	© □	

BALDOR - RELIANCE®

3PH, DV, 9 LEADS, DELTA CONNECTION

SH 1 of 1